

Applicant : SHANGHAI HUACOO COMPOSITE MATERIAL CO., LTD.
 Address : NO.715 XINDA ROAD, QINGPU INDUSTRY PARK, SHANGHAI, P.R.C.

Below information submitted by the applicant:

Product Name : MELTBLOWN NON WOVEN FABRIC
 Model : /
 Model may cover : /
 Reference info. : /
 Manufacturer info. : SHANGHAI HUACOO COMPOSITE MATERIAL CO., LTD.
 NO.715 XINDA ROAD, QINGPU INDUSTRY PARK, SHANGHAI, P.R.C.
 Supplier info. : /
 Buyer info. : /
 Country of Destination : /
 Country of Origin : China

Sample Received : 06.01, 2020
 Test Period : 06.01, 2020 - 06.05, 2020
 Test Requirement : Refer to next pages
 Test Method : Refer to next pages
 Test Result : Refer to next pages
 Test Conclusion : Refer to next pages



Jerry Zhao, Technical Director
 Signed for and on behalf of
 TUV THURINGEN SHANGHAI CO., LTD.
 Shanghai

TUV THURINGEN CHINA

Attention: please note that every statement made in this report is only valid for the samples tested and reported herein. This report shall not be reproduced except in full, without the written approval of the testing laboratory. Any holder of this document is advised that information contained herein reflects the parties to a transaction from exercising all their rights and obligations under the transaction documents.
http://tuv-thuringen.com.cn/news/12_138

E-mail: shanghai@tuv-thuringen.de Web: <http://www.tuv-thuringen.com.cn>

Ver.2020.04.17

TUV Thuringen (Shanghai) Co., Ltd.

Room C6, Floor 16th Jiangsu Building, No.526 Laoshan Road, Shanghai 200122, P.R.China



扫描全能王 创建

TEST RESULTS

As the applicant required, to carry the test items as below:

Test Items	Verdict
1. RoHS 2.0 Directive 2011/65/EU and Its Commission delegated Directive (EU) 2015/863 - Lead and its compounds - Cadmium and its compounds - Mercury and its compounds - Hexavalent Chromium and its compounds - PBBs and PBDEs content - Phthalates (DBP, BBP, DEHP, DIBP) content	PASS

SAMPLE DESCRIPTION

Sample description : 1#. White meltbrown

TEST RESULTS

1. RoHS - Lead (Pb)/Cadmium(Cd)/Mercury(Hg)/Hexavalent Chromium(Cr6+)/ PBBs& PBDEs/ Phthalates

Test Method: with reference to IEC 62321-4:2013:A1:2017, IEC 62321-5:2013, IEC 62321-7-2:2017, IEC 62321-6:2015, analyzed by ICP-OES, UV-Vis, AAS, GCMS etc.

Test Items	Units	MDL	Test Results		Permissible Limit
			1#		
Lead and its compounds	mg/kg	2	n.d.		1000, max
Cadmium and its compounds	mg/kg	2	n.d.		100, max
Mercury and its compounds	mg/kg	2	n.d.		1000, max
Hexavalent Chromium and its compounds	mg/kg	2	n.d.		1000, max
PBBs	mg/kg	—	n.d.		1000, max
Monobromobiphenyl	mg/kg	50	n.d.		—
Dibromobiphenyl	mg/kg	50	n.d.		—
Tribromobiphenyl	mg/kg	50	n.d.		—
Tetrabromobiphenyl	mg/kg	50	n.d.		—
Pentabromobiphenyl	mg/kg	50	n.d.		—
Hexabromobiphenyl	mg/kg	50	n.d.		—
Heptabromobiphenyl	mg/kg	50	n.d.		—
Octabromobiphenyl	mg/kg	50	n.d.		—
Nonabromobiphenyl	mg/kg	50	n.d.		—
Decabromobiphenyl	mg/kg	50	n.d.		—
PBDEs	mg/kg	50	n.d.		1000, max



Test Items	Units	MDL	Test Results		Permissible Limit
			1#		
Monobromodiphenol ether	mg/kg	50	n.d.		—
Dibromodiphenol ether	mg/kg	50	n.d.		—
Tribromodiphenol ether	mg/kg	50	n.d.		—
Tetrabromodiphenol ether	mg/kg	50	n.d.		—
Pentabromodiphenol ether	mg/kg	50	n.d.		—
Hexabromodiphenol ether	mg/kg	50	n.d.		—
Heptabromodiphenol ether	mg/kg	50	n.d.		—
Octabromodiphenol ether	mg/kg	50	n.d.		—
Nonabromodiphenol ether	mg/kg	50	n.d.		—
Decabromodiphenol ether	mg/kg	50	n.d.		—
DBP, Dibutyl Phthalate	mg/kg	30	n.d.		1000, max
BBP, Butyl Benzyl Phthalate	mg/kg	30	n.d.		1000, max
DEHP, Di-(2-ethylhexyl) phthalate	mg/kg	30	n.d.		1000, max
DIBP, Di-isobutyl phthalate	mg/kg	30	n.d.		1000, max

Note:

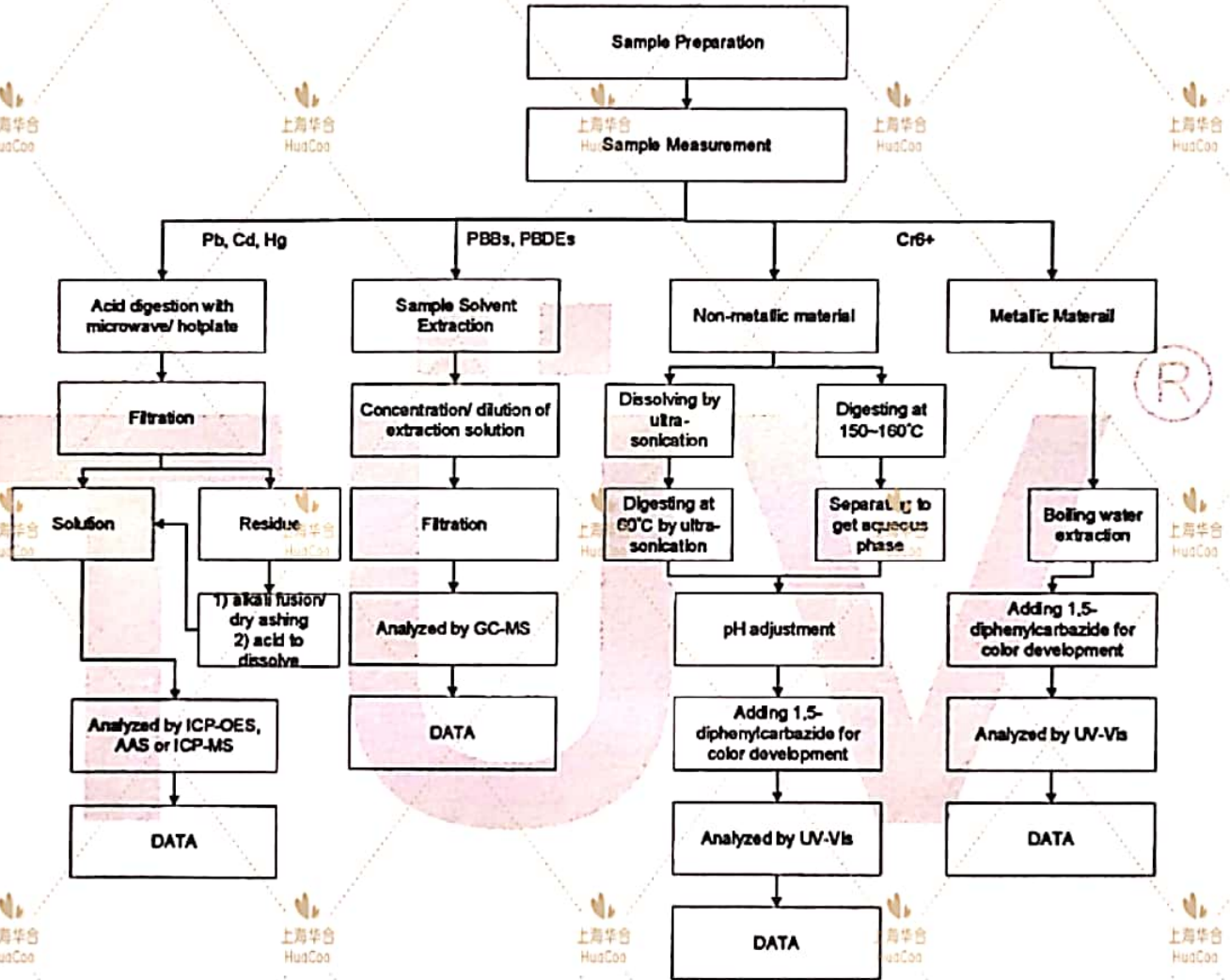
1. %, percentage; mg, milligrams; g, grams; kg, kilograms
2. mg/kg = milligrams per kilograms; mg/L = milligrams per litre
3. 0.1% = 1000mg/kg = 1000mg/L
4. < = less than; > = greater than
5. MDL = method detection limit
6. n.d. = not detected, < MDL
7. n.a. = not applicable
8. n.r. = not required
9. EX = abbr. of Exempted

***** To be continued *****



**Test Flowchart for Hazardous Testing
Pb, Cd, Hg, Cr^{VI}, PBBs, PBDEs**

Method: with reference to IEC 62321 series

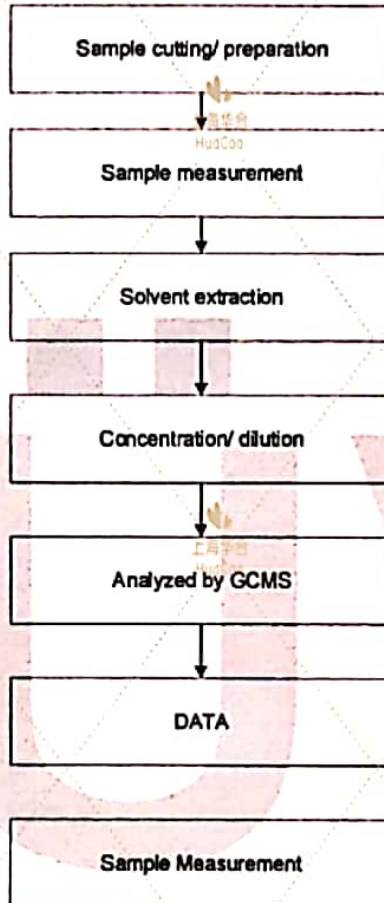


***** To be continued *****



**Test Flowchart for Hazardous Testing
Phthalates (BBP, DBP, DEHP, DIBP)**

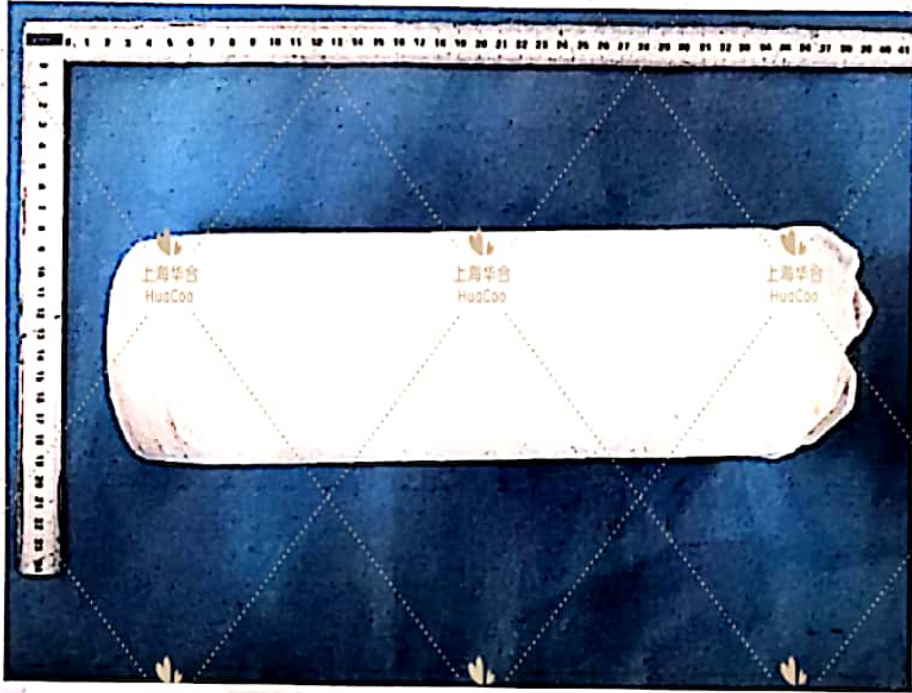
Method: with reference to IEC 62321 series



***** To be continued *****



SAMPLE IMAGE



Tested samples

**** END OF REPORT ****

