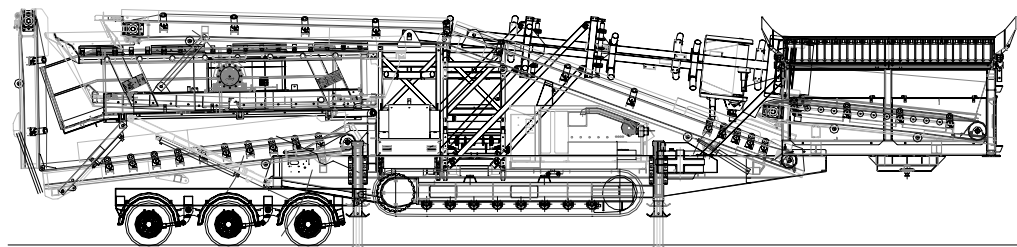
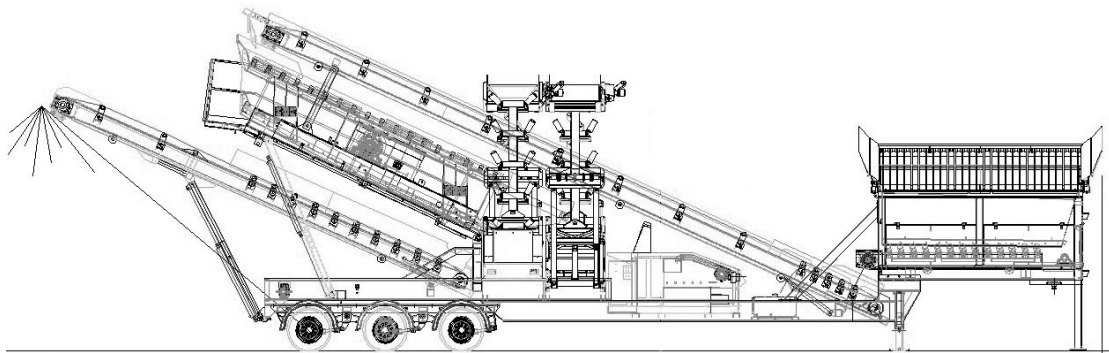
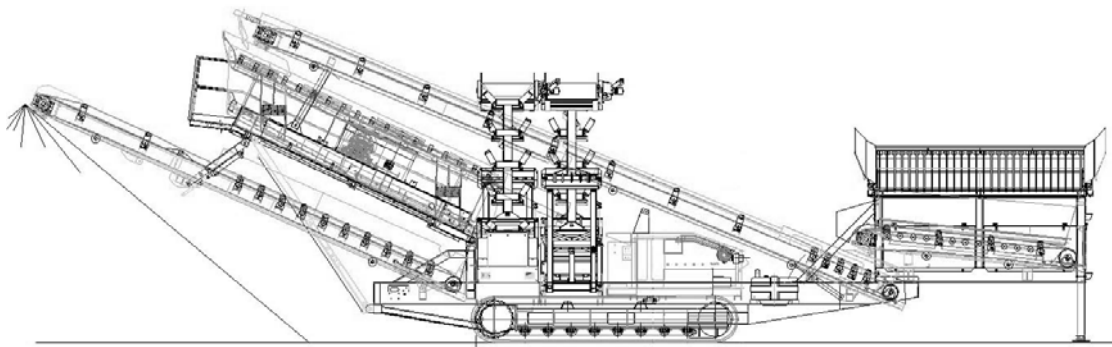




Powerscreen International. Dist. Ltd.  
Coalisland Road, Dungannon,  
Co.Tyrone, N.Ireland BT71 4DR  
Tel: +44(0) 2887 740701  
Fax: +44(0) 2887 746569  
Email: [mail@powerscreen.co.uk](mailto:mail@powerscreen.co.uk)

# *INTRODUCING THE Turbo Chieftain 1800*



All specifications subject to change without prior notice.



## *Turbo Chieftain 1800*

### *Technical Specification*

Chieftain 1800 Sept. 2000

Page 2

#### **FEATURES**

• Total weight	26,630kg (58,586 lbs)	<b>W</b>
• Total weight	32,580kg (71,676 lbs)	<b>T</b>
• Total weight	34,980kg (76,956 lbs)	<b>Track c/w Bogie</b>
• Vibrating grid fitted	29,340kg (64,548 lbs)	<b>W</b>
• Vibrating grid fitted	35,290kg (77,638 lbs)	<b>T</b>
• Width (transport)	2.75m (9')	<b>W</b>
• Width (transport)	2.90m (9.5')	<b>T</b>
• Length (transport)	16.82m	<b>W</b>
•	16.95m	<b>T</b>
• Height (transport)	4.00m	<b>W</b>
•	3.35m	<b>T</b>
• Vibrating grid fitted	3.55m	<b>T</b>
• Hopper capacity	8.0m <sup>3</sup>	<b>T</b>
•	9.5m <sup>3</sup>	<b>W</b>
• Screenunit	4 – bearing 4.88m x 1.55m (16' x 5')	
• Powerunit	Diesel Hydraulic with Deutz BF4M1012C – 82kW (109 Hp).	

#### **ADVANTAGES**

- High capacity -500 TPH, (depending on mesh sizes and material type).
- Quick set up time typically under 15 minutes.
- Maximum mobility with heavy duty, low ground pressure crawler tracks. **T**
- Optional tri-axle bogie system allows the track machine to be transported without the need for a low loader. **T**
- Approved GLD braking axles, spring suspension, mudguards and 235/65/R17.5 dual road wheels. **W**
- Removable heavy duty pendant remote control system. **T**
- Optional radio control system available if required at extra cost. **T**
- High performance hydraulic system – David Brown pumps, Danfoss motors, Oil cooler, Commercial Hydraulics control valves.
- Angle adjustable tipping grid with radio control double acting tipping grid rams.
- Low profile Single deck Vibrating Grid option with remote control tipping. Angle adjustable and fully riveted construction.

#### **APPLICATIONS**

- Sand and gravel
- Topsoil
- Coal
- Crushed stone
- Recycling

**NB - W = WHEEL MACHINE / T = TRACK MACHINE**

**UNLIMITED SOLUTIONS FOR LIMITED RESOURCES**

All specifications subject to change without prior notice.



## Turbo Chieftain 1800 Technical Specification

Chieftain 1800 Sept. 2000

Page 3

### Hopper & Grid:

Adjustable angle tipping grid with integral loading and wing plates	
Grid opening	3.57m x 1.8m (11'-9" x 5'-11")
Grid aperture:	102mm (4")
Target area:	4.3 x 1.8m (14'-1" x 5'-11")
Hopper capacity:	8.0m <sup>3</sup> <b>T</b>
	9.5m <sup>3</sup> <b>W</b>

### Screenunit:

16' x 5' (4.88 x 1.55m) double deck, 4 bearing, free floating vibration system which eliminates the need for fine tuning.

### Feed Conveyor:

1200mm (48") wide direct feed conveyor with direct drive system & hydraulic variable speed control

### Main Conveyor:

1050mm (42") wide hydraulically adjustable conveyor, fully skirted & sealed to prevent spillage.

### Tail Conveyor:

1200mm (48") wide hydraulically folding tail conveyor  
4.09m (13' - 9") stockpile height. (Measured to drum centre) **T**  
4.35m (14' - 3") stockpile height. (Measured to drum centre) **W**

### Side Conveyors:

800mm (32") wide hydraulically folding side conveyors with individual, variable speed control:  
4.31m (14' - 1.5") stockpile height. (Measured to drum centre) **T**  
4.55m (14' - 11") stockpile height. (Measured to drum centre) **W**

### Powerunit & Hydraulics:

Diesel engine:	Deutz BF4M 1012C, with output up to 82 kW (109 Hp), developing 72 kW (96Hp) at 2200 rpm.
Flywheel pump1:	David Brown 4032/4032 (32cc/rev each circuit)
PTO pump1:	David Brown 5023/5023 (23cc/rev each circuit)
PTO pump2:	Ultra I PL072
Feeder Motor:	Danfoss OMSS250 (250cc/rev)
Main conveyor Motor:	Danfoss OMT500 (500cc/rev)
Tail Conveyor Motor:	Danfoss OMT500 (500cc/rev)
Side Conveyor Motor:	Danfoss OMT500 (500cc/rev)
Screen Motor:	David Brown MCC 2208 (59cc/rev)

**NB - T = TRACK MACHINE / W = WHEEL MACHINE**

UNLIMITED SOLUTIONS FOR LIMITED RESOURCES

All specifications subject to change without prior notice.



# *Turbo Chieftain 1800*

## *Technical Specification*



Chieftain 1800 Sept. 2000

Page 4

### *Tank Capacities:*

Hydraulic tank: 564 L (124 Gal)  
 Diesel tank: 336 L (74 Gal)

### *Crawler Track Data: T*

Tractive Effort = 20,830 daN  
 Gradability Percentage = 101 % ( 45deg)  
 Gearbox Ratio = 1:153  
 Hydraulic Motor = Rexroth 90 cc/rev  
 Approximate Speed = 0.62 Km/hr

### *Road Transport: W*

Wheels: 235/75/R17.5 Dual  
 Axle: Approved braking axle (GLD manufacture)  
 Suspension: Mono leaf spring suspension  
 Brakes: Air brakes, (ABS optional)  
 Mudguards: Plastic type  
 Lateral Protection: Optional extra.  
 Lights: Optional extra.

### *Vibrating Grid Option*

Screen size: 3.05m x 2.14m (10' x 7').  
 Working angle: 10° to 20° adjustable.  
 Tip angle: 45° maximum.  
 Motor: David Brown MCC 2208 (59cc/rev)  
 Circuit: Coupled to main conveyor circuit.  
 Transport height: 3.55m **T**  
 Transport height: 4.0m **W**  
 Transport height: 4.0m **Track Bogie**

***NB - T = TRACK MACHINE / W = WHEEL MACHINE***

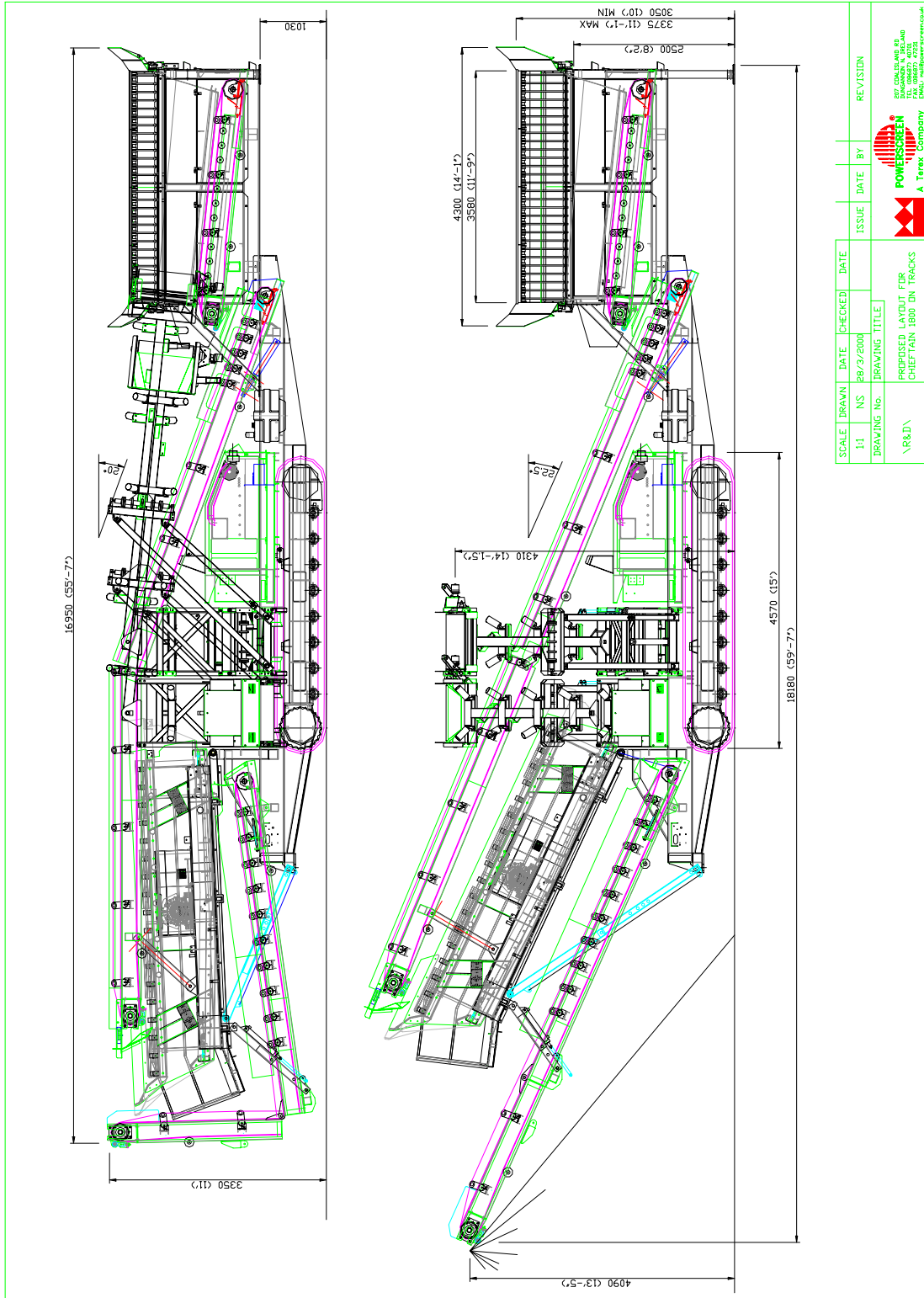


# Turbo Chieftain 1800 Technical Specification



Chieftain 1800 Sept. 2000

Page 5





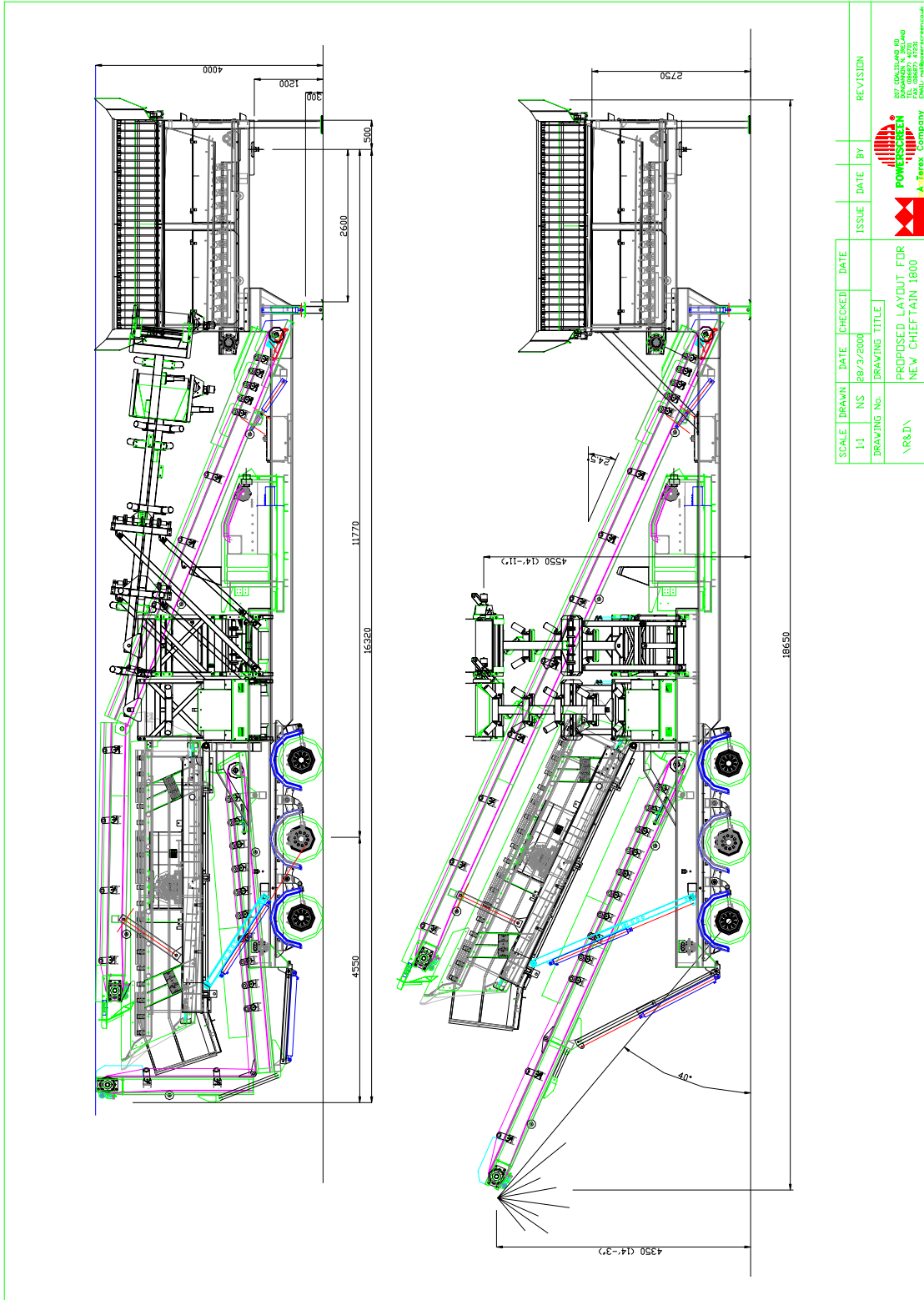


# Turbo Chieftain 1800 Technical Specification



Chieftain 1800 Sept. 2000

Page 6



SCALE	DRAWN	DATE	CHECKED	DATE	ISSUE	DATE	BY	REVISION
1:1	NS	08/23/2000						
VR&D\								
DRAWING No.		DRAWING TITLE		PROPOSED LAYOUT FOR NEW CHIEFTAIN 1800				



**UNLIMITED SOLUTIONS FOR LIMITED RESOURCES**

All specifications subject to change without prior notice.



# *Turbo Chieftain 1800 Technical Specification*



Chieftain 1800 Sept. 2000

Page 7

**UNLIMITED SOLUTIONS FOR LIMITED RESOURCES**

All specifications subject to change without prior notice.

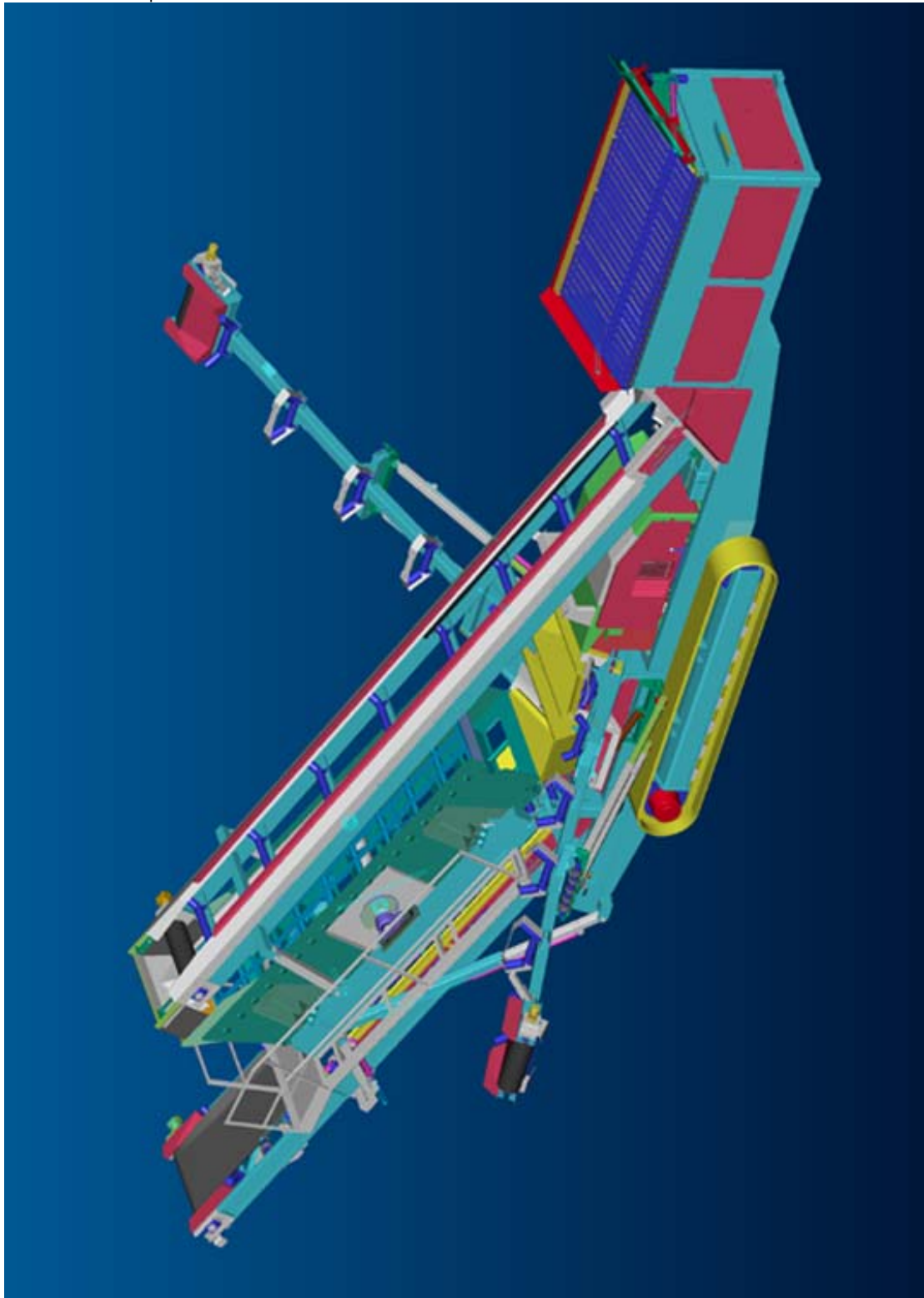


# *Turbo Chieftain 1800 Technical Specification*



Chieftain 1800 Sept. 2000

Page 8



**UNLIMITED SOLUTIONS FOR LIMITED RESOURCES**

All specifications subject to change without prior notice.

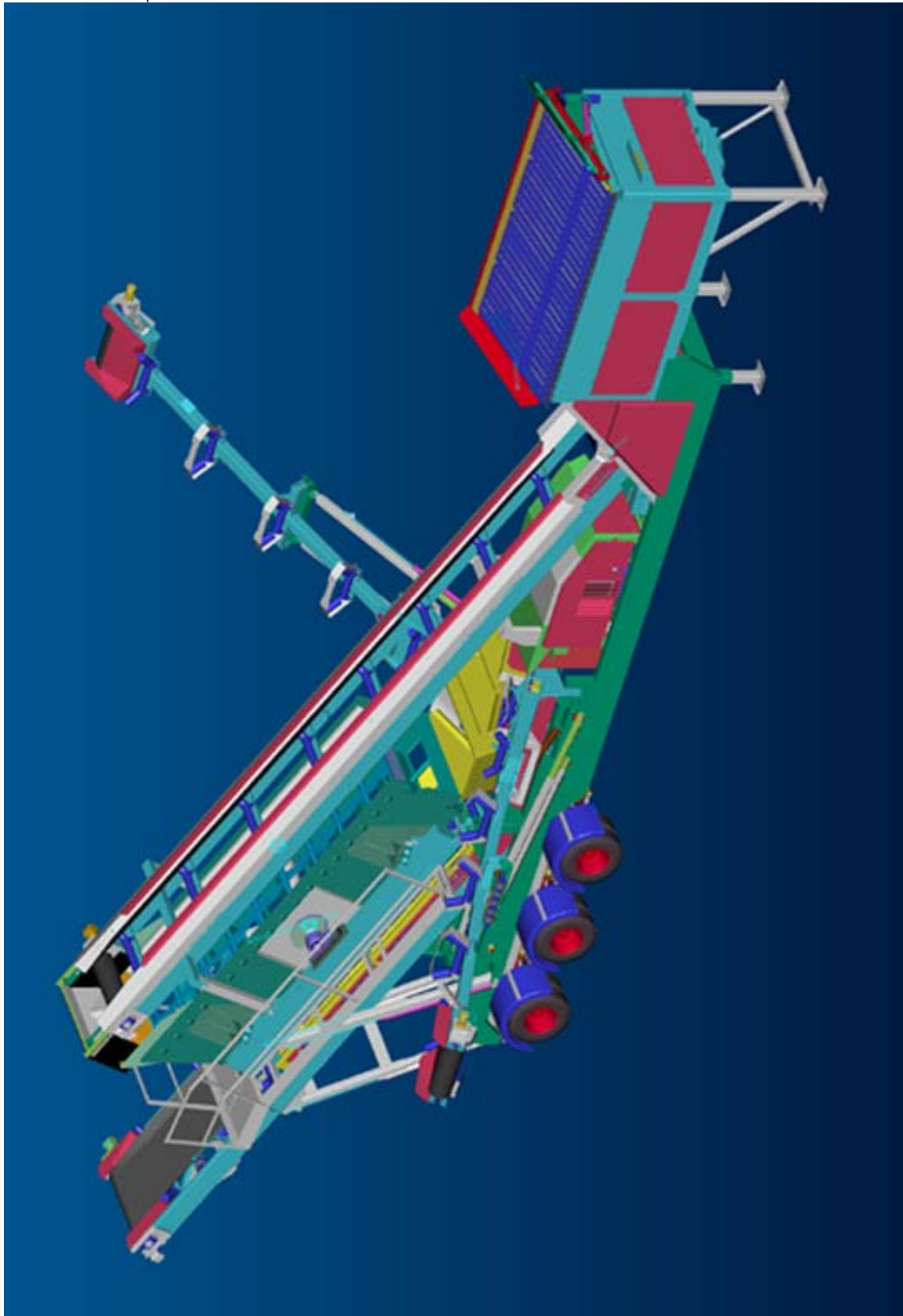




# *Turbo Chieftain 1800 Technical Specification*

Chieftain 1800 Sept. 2000

Page 9



**UNLIMITED SOLUTIONS FOR LIMITED RESOURCES**

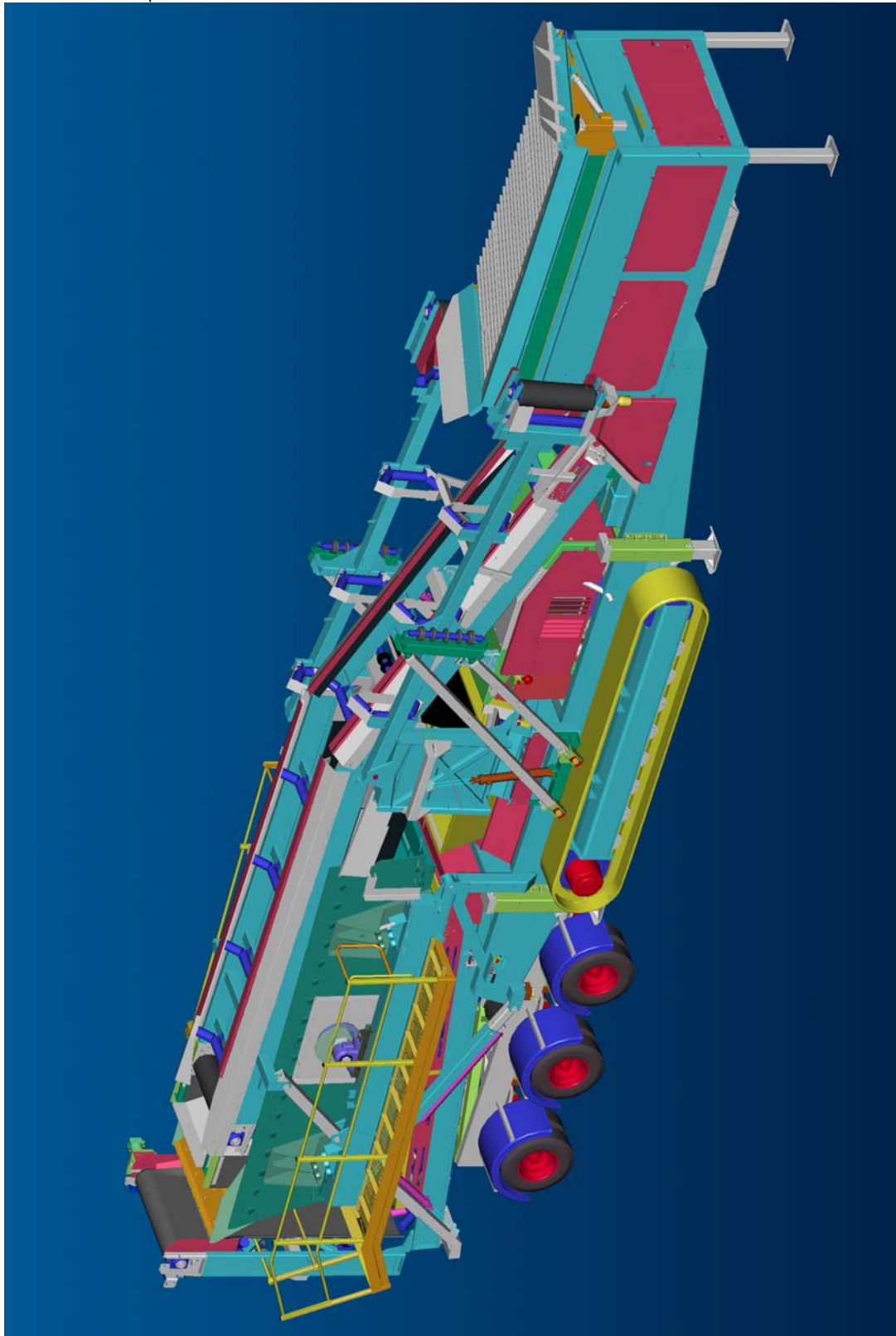
All specifications subject to change without prior notice.



# *Turbo Chieftain 1800 Technical Specification*

Chieftain 1800 Sept. 2000

Page 10



**UNLIMITED SOLUTIONS FOR LIMITED RESOURCES**

All specifications subject to change without prior notice.

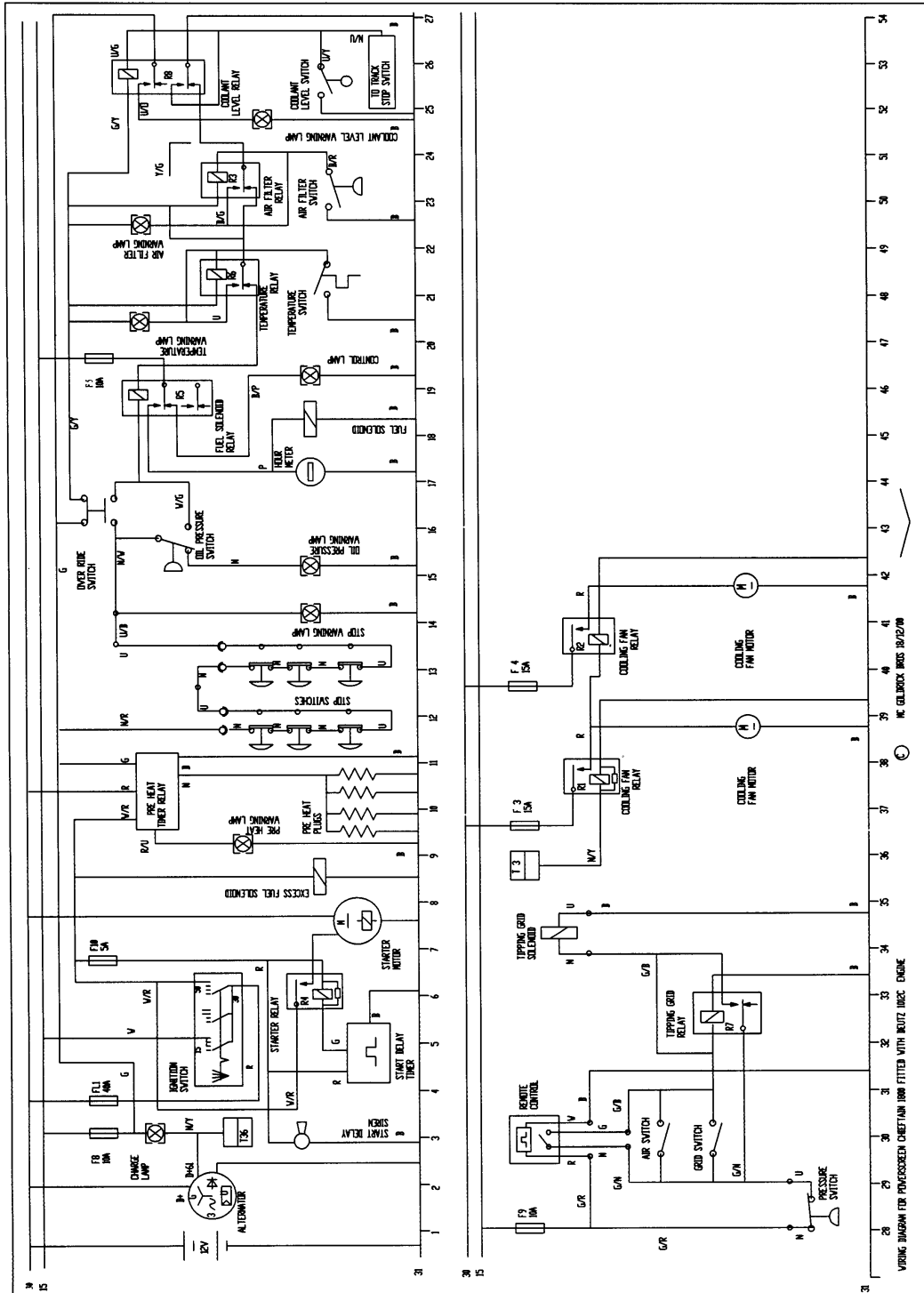


# Turbo Chieftain 1800 Technical Specification



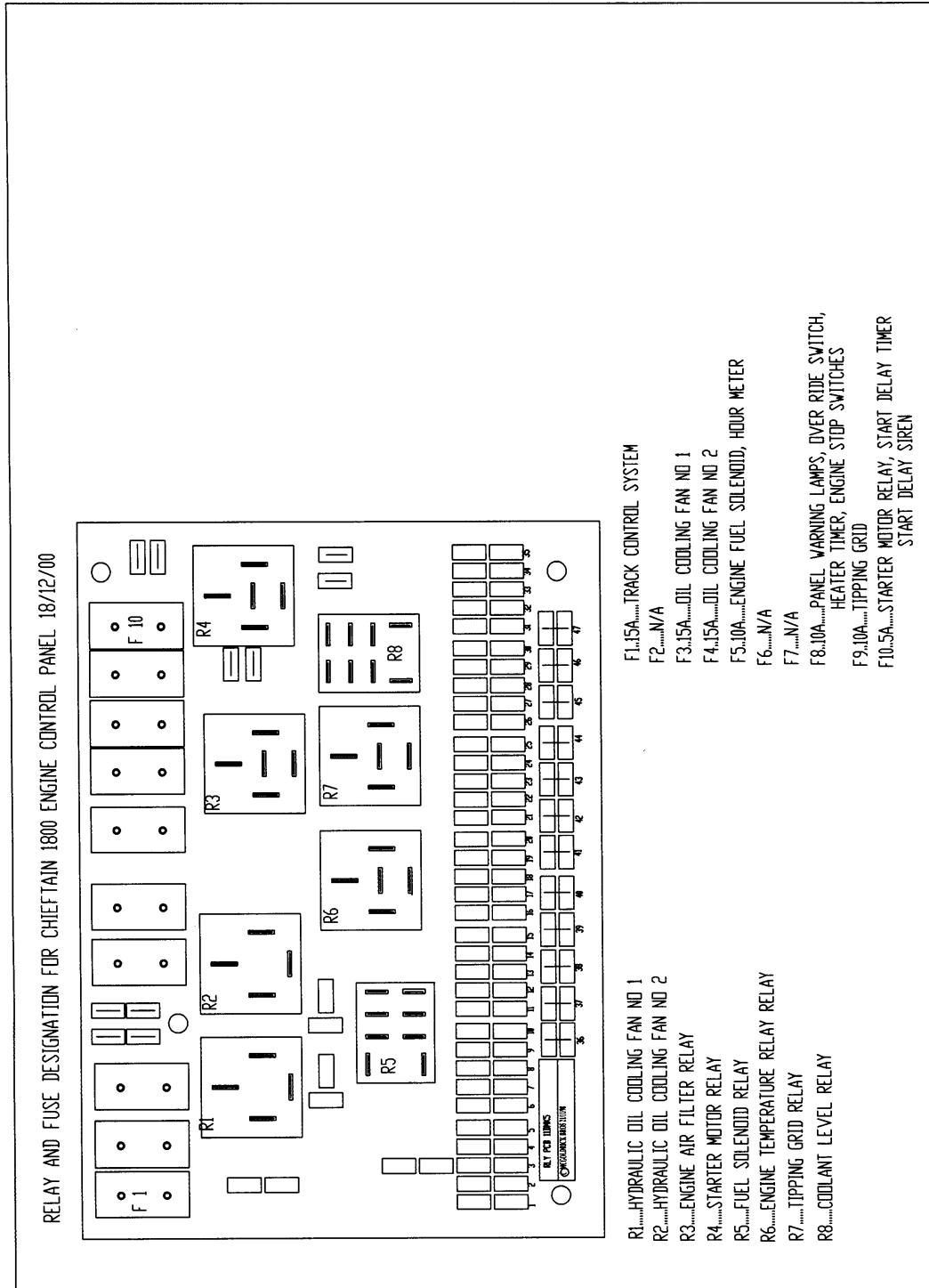
Chieftain 1800 Sept. 2000

Page 11





# Turbo Chieftain 1800 Technical Specification

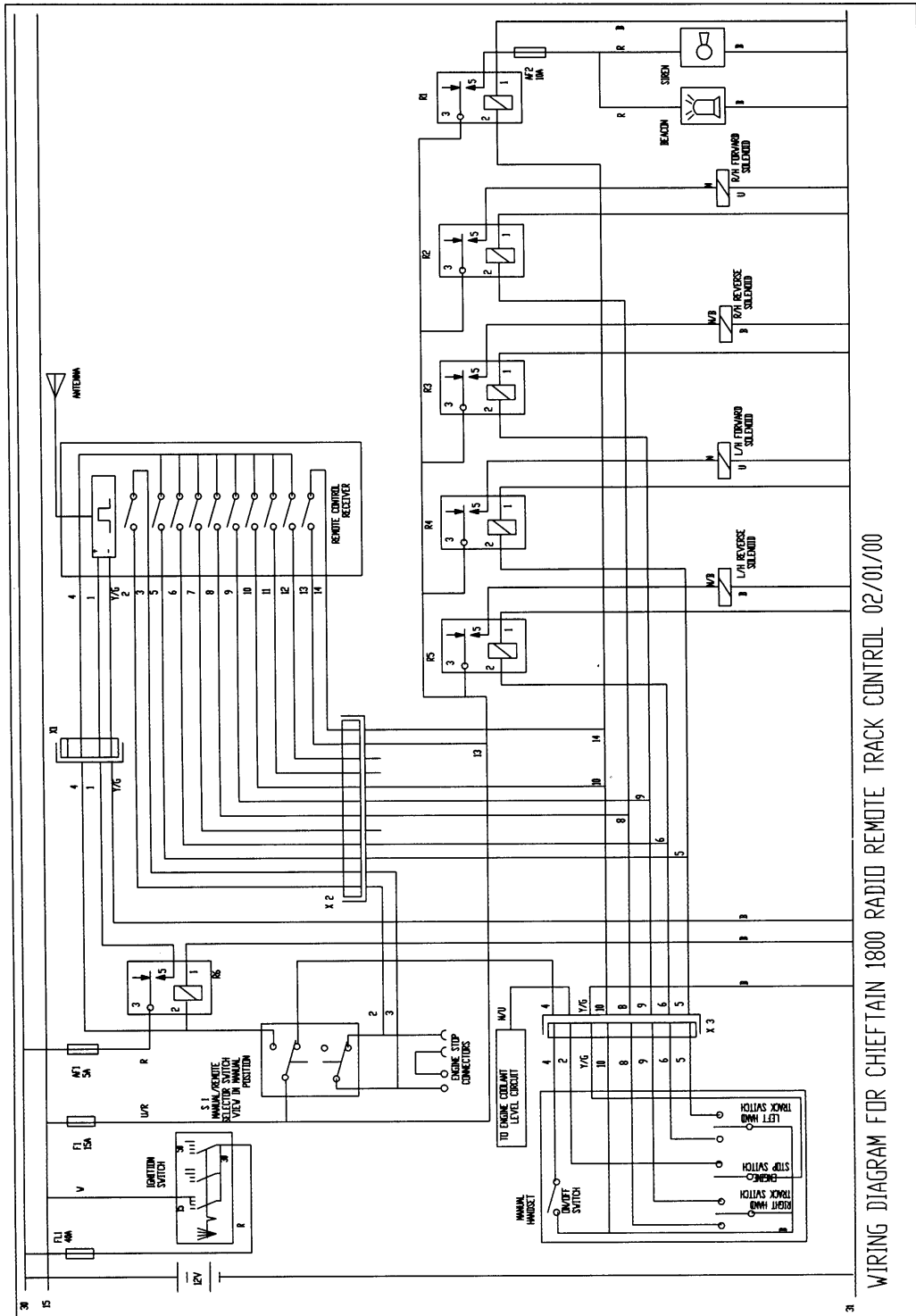








# Turbo Chieftain 1800 Technical Specification



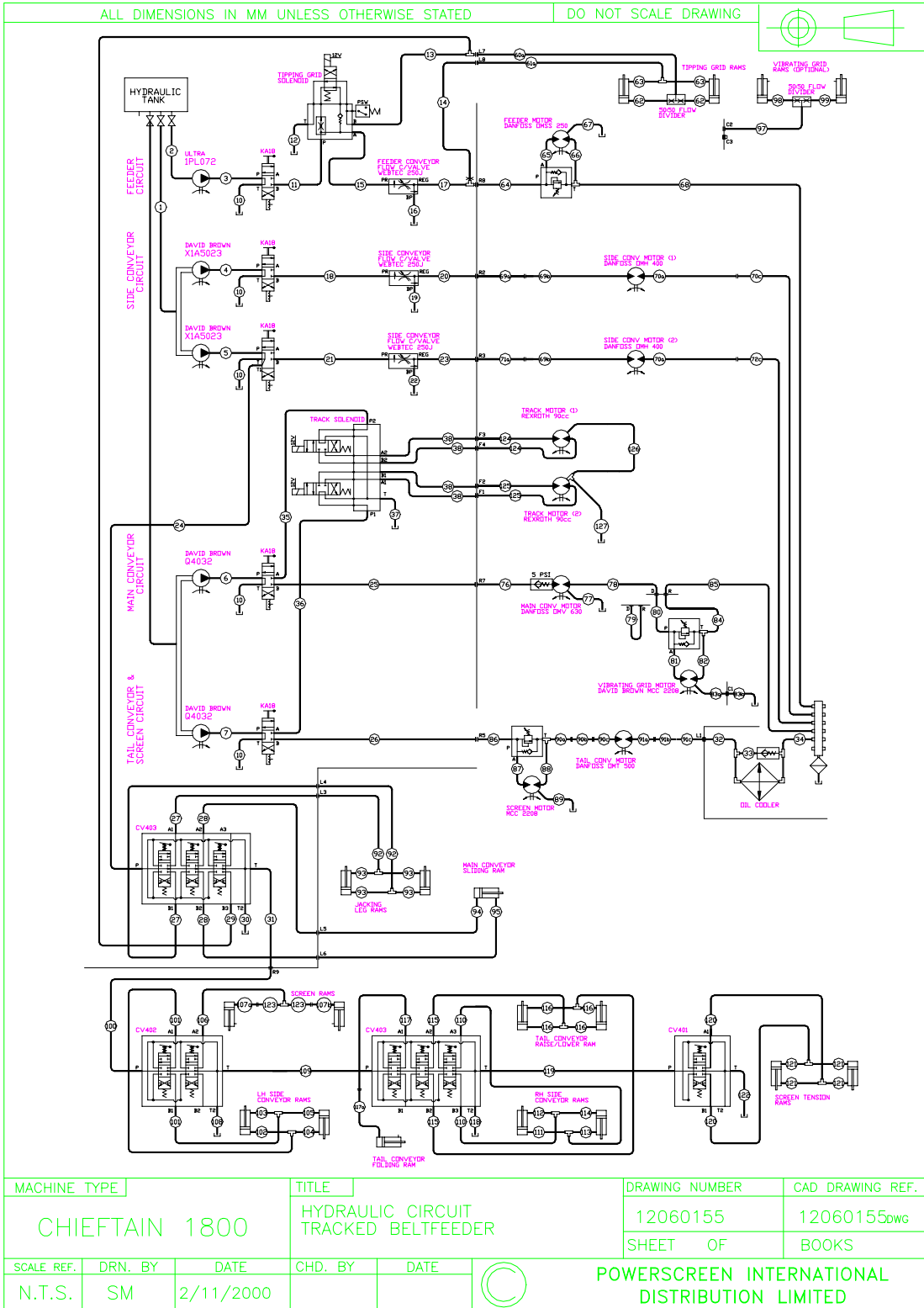


# Turbo Chieftain 1800 Technical Specification



Chieftain 1800 Sept. 2000

Page 15



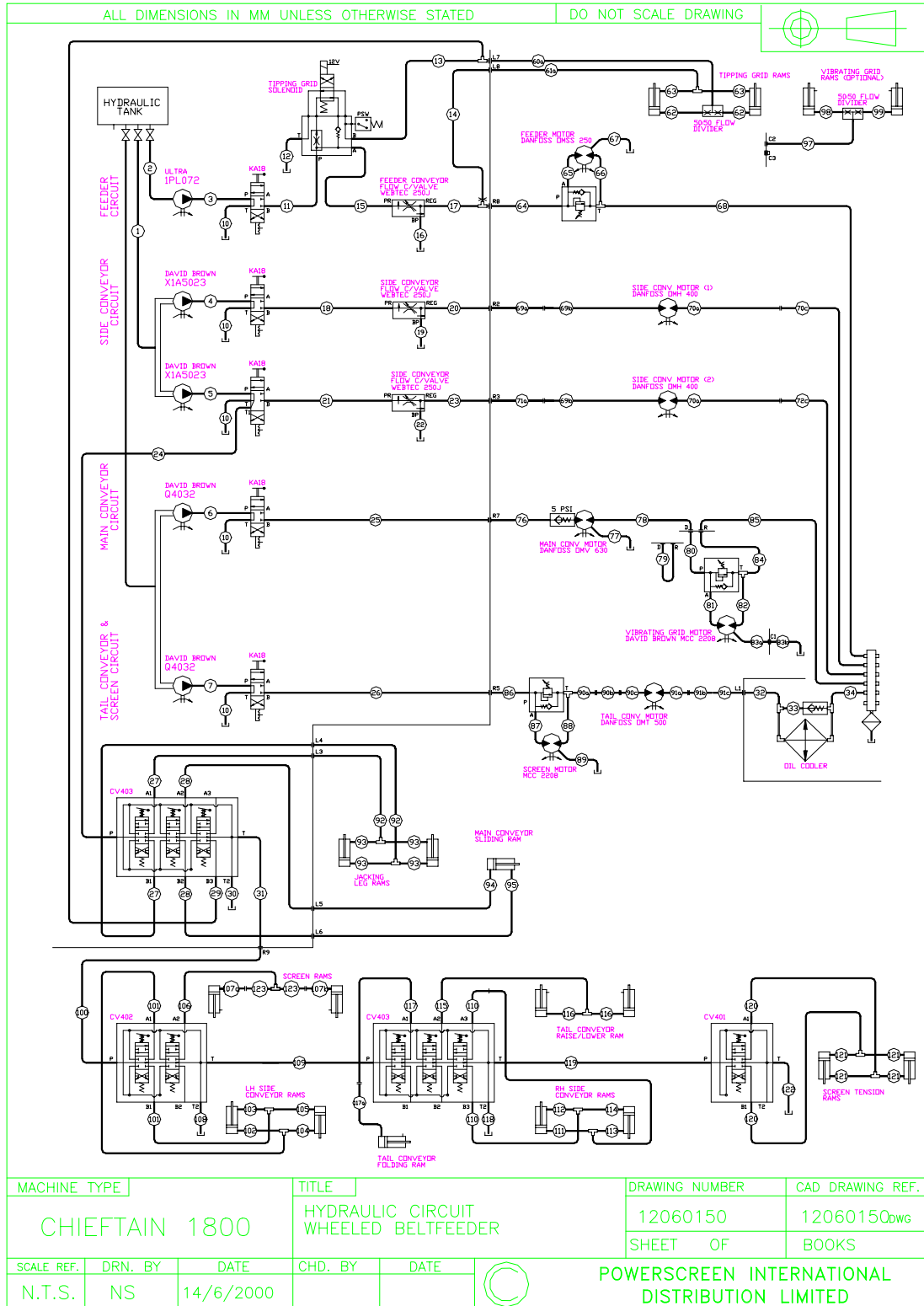


# Turbo Chieftain 1800 Technical Specification



Chieftain 1800 Sept. 2000

Page 16



All specifications subject to change without prior notice.